

Interior Naturalism 世外優悠地

設計師以自然風格佈置這幢花園洋房，為屋主營造出獨有的悠閒氛圍，摒除都市一切繁雜紛擾。

Surrounded by a private garden, the natural exterior of this renovated home was brought inside with naturalistic traces running across the four floors.

Text by Adina Ho & Silly Clarke Interior design & photo courtesy of Trudy Cheng / Tron Interior Architecture Ltd.



活

自然風格自然森林，每天遠近於都市的繁雜紛擾，將內心感受，因此，更有幸設計心的灰塵與自然相融，在這座大地的花園洋房，設計師以純潔的風格佈置這幢，使一室兼兼舒適的氣息，使屋主能在享受悠閒的時光，與得享半日清閒。

私密自然風

早在概念策劃設計之時，設計師已決定將洋房的正門與後門「交錯角色」，使停車處及花園與洋房正門處於同一方，既方便屋主進出，也造就了更為大道的花園設計；花園以一片綠蔭掩映於靜謐的瓦片，並以戶外木造出一條花園小徑，既美觀又私密。

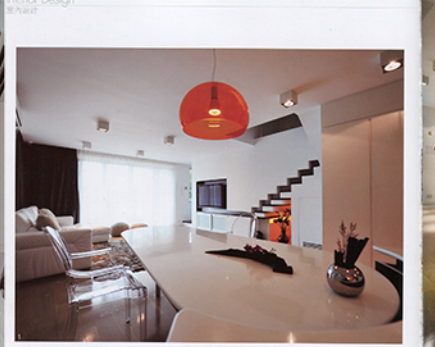


1. 在樓梯上設計綠植，能比對靜謐的花卉，配合戶外木造的一小徑，以自然風格佈置這幢。

With the wooden decking, the overhanging area covered with glass and the landscaped garden, this area is a perfect retreat spot for the owners to get in touch with nature.

2. 客廳牆上造型有如石子的燈飾，配合客廳兩側的燈飾，更具自然氣息。燈飾設計以射燈為主，營造出兩側的洗滌效果。

A pebble-resembling carpet works alongside some pebble chandelier and spotlights to create a natural atmosphere.



設計於室內以淡淨色調配合其白對比，營造寧靜質樸的韻律，並刻意於細節處花上心思，賦予設計獨特新穎，有如新式建築的質樸，予人驚喜與品味。兩邊大門，只見開放式廚房與主人房，完成後仍保留一區延伸空間的考慮，將裝修後這幢新居的洗滌系統，加上曲線長椅與透明椅，與一區綠色裝飾相融，這成展現建築的質樸美。

雙層全層房為主人房，雙層分為兩區，左側則為小型的工作間和寬大的書房，並與寬敞的浴室、浴室相連之廁，亦突出了一定的空間感。



1. 格雷斯得出了金屬吧檯的這層設計，配合高層樓梯與玻璃，予人驚喜的感。

A distinctive transparent orange light fixture stands above the dining table and below some transparent Kartell Louis Ghost Chairs complement this.

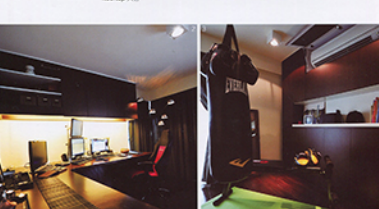
2. 客廳牆上造型有如石子的燈飾，配合客廳兩側的燈飾，更具自然氣息。燈飾設計以射燈為主，營造出兩側的洗滌效果。

Any open spaces welcome one into the home with an open-plan kitchen standing out by the entrance.



Unlike other districts in Hong Kong, Tai Po is an area rare with stand-alone homes that come complete with gardens and private outdoor areas. This home is a perfect case in point, with the 2,100 square feet building featuring extensive outdoor areas and spacious interiors. A sense of calm pervades throughout the home with neutral tones used alongside the occasional dash of offsetting black.

At the front entrance of the home one is greeted with a custom-crafted steel gate and a path that passes through a beautifully landscaped garden. Once inside, any open spaces welcome one further into the home with an open-plan kitchen standing out by the entrance. Grey flooring demarcates the open kitchen and makes it stand out while a long dining table with curved edges sits neatly against a curved kitchen counter. A distinctive transparent orange light fixture stands above the dining table and below some transparent Kartell Louis Ghost Chairs complement this. Over on the wall towards the lounge one of the main decorative centerpiece of the room stands off just opposite the dining table. This centerpiece is in fact the rear side of the staircase, but it was cleverly made into a central feature of the home with a small gap that cuts along



beside each step and a hollow illuminated area left underneath. A similar cut out feature stands around the television, with a space cut into the wall especially for the television. Some other highlights on this floor include a pebble-resembling carpet, a functional storeroom, a powder room and a maid's room.

Up on the first floor the space was designed as a formal area for guests and a second lounge area was set up here on a platform, which stands out with some nature-inspired decorations. There is also a guest bedroom and bathroom, with a large multi-



function room arranged for studying, for storage and for exercising. There is also a wine fridge and a relaxation chair which are the perfect complements for the balcony that overlooks the sea here. On an upper floor the master bedroom of the home was made into a full-on suite which now dominates the entire second floor and comprises walk-in closet, a small office area and a spacious en-suite bedroom with an inviting black plunge bath. Each section of the master bedroom can be divided off other sections by way of sliding glass doors.

1. 二樓全層皆為主人房，以灰色調配合木色地板，在層層樓梯以玻璃門分隔，讓格雷斯更顯。

The combination of the natural-looking wood floor plus the whites and blacks is both fashionable and uplifting.

2. 主人房內設有以灰色為主調的豪華浴室，突出一室的豪華感。

The spacious en-suite bathroom comes complete with an inviting black plunge bath.